

Courtesy Of Mani Bagga and Shivani Bagga Of Royal Lepage Magna

\$1,178,800 - 839 Wildwood Crescent, Edmonton

MLS® #E4417110

\$1,178,800

7 Bedroom, 6.50 Bathroom, 4,406 sqft

Single Family on 0.00 Acres

Wild Rose, Edmonton, AB

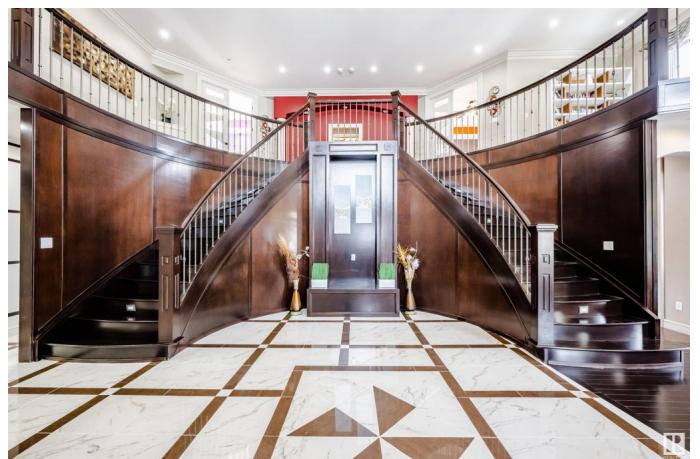
Stunning Custom Built 2 Storey in Wild Rose boasts 4405 + 2057 sqft, 5+2 bdrms, 4+2 baths, FULLY FINISHED WALKOUT bsmnt & triple attached garage. Gleaming tile & hardwood floors welcome you in the spacious entrance. Pass through the formal living rm to the exquisite CUSTOM KITCHEN featuring crisp décor, granite countertops, stunning tile work & light fixtures, large island, stainless steel appliances & SPICE KITCHEN. Flooded with natural light, the open concept floor plan gives direct access to the dining area, den, large family rm with electric fireplace & high ceilings. A 2 pce bath, bedroom/den & mudroom complete this level. A double staircase brings you to a bonus room along with the spacious primary suite featuring 5pce ensuite & walk in closet. 3 additional bdrms, upper floor laundry complete this level. The FULLY FINISHED WALKOUT BASEMENT features family room, theatre, bar, bdrm, and a full separate rental suite with kitchen, 2 bdrms, 4 pce bath. Too many upgrades to list, this home is a MUST SEE!

Built in 2010

Essential Information

MLS® # E4417110

Price \$1,178,800



Bedrooms	7
Bathrooms	6.50
Full Baths	6
Half Baths	1
Square Footage	4,406
Acres	0.00
Year Built	2010
Type	Single Family
Sub-Type	Detached Single Family
Style	2 Storey
Status	Active

Community Information

Address	839 Wildwood Crescent
Area	Edmonton
Subdivision	Wild Rose
City	Edmonton
County	ALBERTA
Province	AB
Postal Code	T6T 0M1

Amenities

Amenities	Bar, Ceiling 9 ft., Deck, Guest Suite, Patio, Walkout Basement, Wet Bar, See Remarks
Parking Spaces	6
Parking	Heated, Over Sized, Triple Garage Attached

Interior

Interior Features	ensuite bathroom
Appliances	Air Conditioning-Central, Fan-Ceiling, Garage Control, Hood Fan, Oven-Built-In, Oven-Microwave, Stove-Countertop Electric, Stove-Gas, Window Coverings, Dryer-Two, Refrigerators-Two, Washers-Two, Projector, Curtains and Blinds, Garage Heater
Heating	Forced Air-2, Natural Gas
Fireplace	Yes
Fireplaces	Glass Door, Stone Facing
Stories	3
Has Basement	Yes
Basement	Full, Finished

Exterior

Exterior	Wood, Stone, Stucco
Exterior Features	Airport Nearby, Backs Onto Park/Trees, Corner Lot, Creek, Fenced, Landscaped, Low Maintenance Landscape, Park/Reserve, Playground Nearby, Public Transportation, Ravine View, Schools, Shopping Nearby, See Remarks
Roof	Asphalt Shingles
Construction	Wood, Stone, Stucco
Foundation	Concrete Perimeter

School Information

Elementary	Verma E. Baker School
Middle	Thelma Chalifoux School
High	Dr. Francis Whiskey Jack

Additional Information

Date Listed	January 6th, 2025
Days on Market	67
Zoning	Zone 30

DATA IS DEEMED RELIABLE BUT IS NOT GUARANTEED ACCURATE BY THE REALTORS® ASSOCIATION OF EDMONTON. COPYRIGHT 2025 BY THE REALTORS® ASSOCIATION OF EDMONTON. ALL RIGHTS RESERVED. Trademarks are owned or controlled by the Canadian Real Estate Association (CREA) and identify real estate professionals who are members of CREA (REALTOR®, REALTORS®) and/or the quality of services they provide (MLS®, Multiple Listing Service®)

Listing information last updated on March 14th, 2025 at 6:02am MDT