

Courtesy Of Jeff D Jackson Of Bode

# \$639,900 - 7252 182 Avenue, Edmonton

MLS® #E4420517

**\$639,900**

4 Bedroom, 2.50 Bathroom, 2,375 sqft  
Single Family on 0.00 Acres

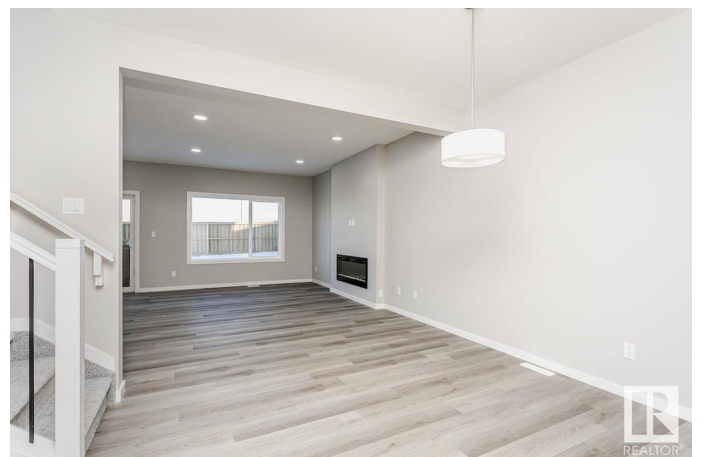
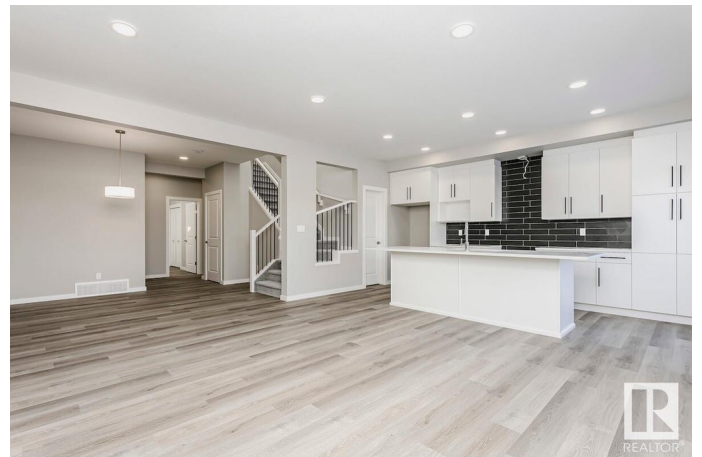
Crystallina Nera East, Edmonton, AB

Welcome to the Maeve F model by Bedrock Homes—a modern 3 bedroom (+ den), 2.5-bathroom front drive home offering 2300+ sq ft of stylish, functional space in the desirable Crystallina community. This home features an open-concept main floor with a cozy 50" LED electric fireplace, luxury vinyl plank flooring, and a gourmet kitchen with 41" upper cabinets, quartz countertops, and a premium Samsung appliance package. Upstairs, discover a central bonus room, second-floor laundry, and a primary suite which includes a spa-like ensuite complete with soaker tub, stand-up shower, and dual vanities. Built for convenience, this smart home includes a Smart Home Hub, EcoBee thermostat, video doorbell, and Weiser Wi-Fi smart keyless lock. SIDE ENTRY for future suite! Photos are representative\*\*

Built in 2024

## Essential Information

MLS® #	E4420517
Price	\$639,900
Bedrooms	4
Bathrooms	2.50
Full Baths	2
Half Baths	1
Square Footage	2,375



Acres	0.00
Year Built	2024
Type	Single Family
Sub-Type	Detached Single Family
Style	2 Storey
Status	Active

### **Community Information**

Address	7252 182 Avenue
Area	Edmonton
Subdivision	Crystallina Nera East
City	Edmonton
County	ALBERTA
Province	AB
Postal Code	T5Z 0J1

### **Amenities**

Amenities	No Animal Home, No Smoking Home
Parking Spaces	4
Parking	Double Garage Attached

### **Interior**

Interior Features	ensuite bathroom
Appliances	Dishwasher-Built-In, Microwave Hood Fan, Refrigerator, Stove-Electric
Heating	Forced Air-1, Natural Gas
Fireplace	Yes
Fireplaces	Insert
Stories	2
Has Basement	Yes
Basement	Full, Unfinished

### **Exterior**

Exterior	Wood, Fiber Cement, Stone, Vinyl
Exterior Features	Level Land, Park/Reserve, Playground Nearby, Schools, Shopping Nearby
Roof	Asphalt Shingles
Construction	Wood, Fiber Cement, Stone, Vinyl
Foundation	Concrete Perimeter

### **Additional Information**

Date Listed February 6th, 2025

Days on Market 36

Zoning Zone 28

DATA IS DEEMED RELIABLE BUT IS NOT GUARANTEED ACCURATE BY THE REALTORS® ASSOCIATION OF EDMONTON. COPYRIGHT 2025 BY THE REALTORS® ASSOCIATION OF EDMONTON. ALL RIGHTS RESERVED. Trademarks are owned or controlled by the Canadian Real Estate Association (CREA) and identify real estate professionals who are members of CREA (REALTOR®, REALTORS®) and/or the quality of services they provide (MLS®, Multiple Listing Service®)

Listing information last updated on March 14th, 2025 at 6:32am MDT