

## \$229,900 - 3 Willowdale Place, Edmonton

MLS® #E4422306

**\$229,900**

3 Bedroom, 1.50 Bathroom, 915 sqft  
Condo / Townhouse on 0.00 Acres

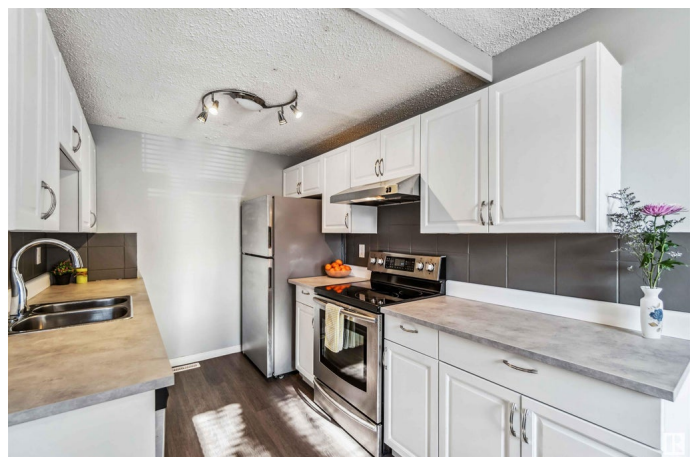
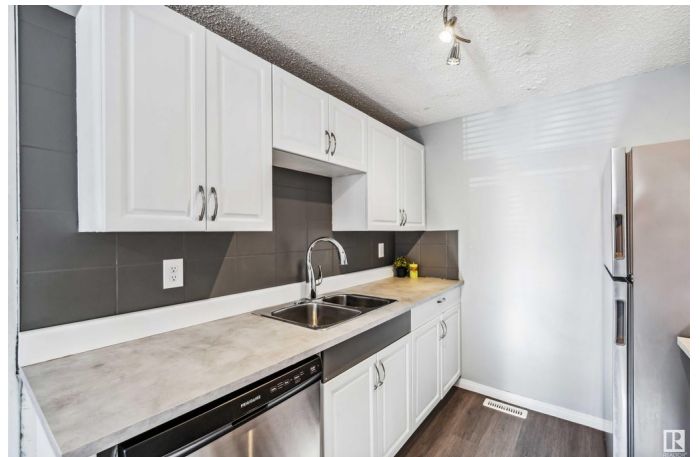
Ormsby Place, Edmonton, AB

Updated 3-Bedroom Townhouse – Ideal Starter Home or Investment! This beautifully upgraded home offers a 3-bedroom, 1.5-bathroom. Ideally located on Edmonton’s west side, just minutes from West Edmonton Mall with easy access to Anthony Henday Drive, close to all amenities, Misericordia Hospital, Schools, 5 minute drive from Wolf Willow area and river valley, 20 minutes drive to downtown. This home offers modern updates in a well-managed, family-friendly complex. Enjoy newer windows, durable vinyl plank flooring, and fresh paint throughout. The stylishly updated kitchen features new countertops, upgraded cabinets, and stainless steel appliances. With plenty of storage, a finished basement with a separate laundry area, and two surface parking stalls. Move-in ready! Don’t miss this fantastic opportunity!

Built in 1976

### Essential Information

MLS® #	E4422306
Price	\$229,900
Bedrooms	3
Bathrooms	1.50
Full Baths	1
Half Baths	1



Square Footage	915
Acres	0.00
Year Built	1976
Type	Condo / Townhouse
Sub-Type	Townhouse
Style	2 Storey
Status	Active

### **Community Information**

Address	3 Willowdale Place
Area	Edmonton
Subdivision	Ormsby Place
City	Edmonton
County	ALBERTA
Province	AB
Postal Code	T5T 1Z4

### **Amenities**

Amenities	Parking-Extra, Parking-Visitor, Television Connection
Parking Spaces	2
Parking	Stall

### **Interior**

Appliances	Dishwasher-Built-In, Dryer, Hood Fan, Stove-Electric, Washer, Window Coverings, Refrigerators-Two
Heating	Forced Air-1, Natural Gas
Stories	2
Has Basement	Yes
Basement	Full, Finished

### **Exterior**

Exterior	Wood, Stucco
Exterior Features	Fruit Trees/Shrubs, Low Maintenance Landscape, Schools, Shopping Nearby
Roof	Asphalt Shingles
Construction	Wood, Stucco
Foundation	Concrete Perimeter

### **Additional Information**

Date Listed	February 20th, 2025
Days on Market	22
Zoning	Zone 20
Condo Fee	\$429

DATA IS DEEMED RELIABLE BUT IS NOT GUARANTEED ACCURATE BY THE REALTORS® ASSOCIATION OF EDMONTON. COPYRIGHT 2025 BY THE REALTORS® ASSOCIATION OF EDMONTON. ALL RIGHTS RESERVED. Trademarks are owned or controlled by the Canadian Real Estate Association (CREA) and identify real estate professionals who are members of CREA (REALTOR®, REALTORS®) and/or the quality of services they provide (MLS®, Multiple Listing Service®)

Listing information last updated on March 14th, 2025 at 8:47am MDT