

## **\$639,900 - 1140 Goodwin Circle Circle, Edmonton**

MLS® #E4423385

**\$639,900**

5 Bedroom, 3.50 Bathroom, 2,281 sqft

Single Family on 0.00 Acres

Glastonbury, Edmonton, AB

Welcome to Parkland Estates in Glastonbury. Perfect home for multigenerational family. This beautifully appointed two storey offers 5 bedrooms, finished basement & with an outstanding location. Upon entry, you are greeted with open concept living. The gourmet kitchen offers plenty of cabinets, stainless steel appliances, corner pantry & island that overlooks the dining & living room c/w cozy fireplace. Flex room & guest bath compliment the functional layout. Curved staircase leads you upstairs where you will find a family sized bonus room. The primary bedroom is spacious and offers a 5 piece ensuite with jacuzzi tub. The two spacious bedrooms, 4pc.bath & laundry complete the upper level. ENJOY the fully finished basement with 2 more bedrooms, 3pc bath, flex room & tons of storage, making this the perfect family home! LOVE the fenced & landscaped SOUTH yard with tiered deck. Steps away from Guinevere Park, trails, schools & shopping, plus easy access to Whitemud Drive & Anthony Henday.

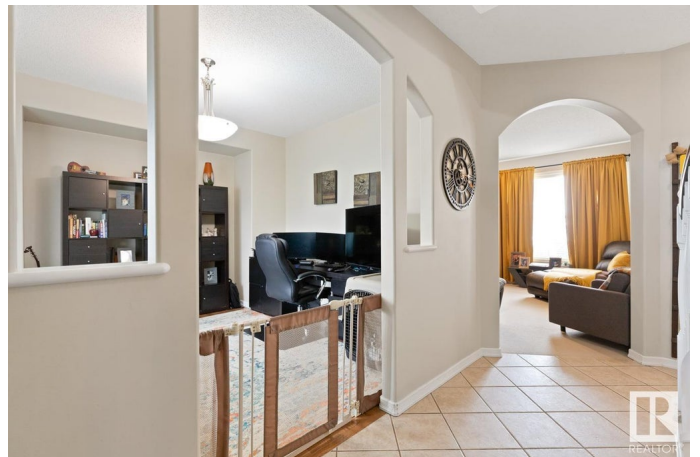
Built in 2005

### **Essential Information**

MLS® # E4423385

Price \$639,900

Bedrooms 5



|                |                        |
|----------------|------------------------|
| Bathrooms      | 3.50                   |
| Full Baths     | 3                      |
| Half Baths     | 1                      |
| Square Footage | 2,281                  |
| Acres          | 0.00                   |
| Year Built     | 2005                   |
| Type           | Single Family          |
| Sub-Type       | Detached Single Family |
| Style          | 2 Storey               |
| Status         | Active                 |

### Community Information

|             |                            |
|-------------|----------------------------|
| Address     | 1140 Goodwin Circle Circle |
| Area        | Edmonton                   |
| Subdivision | Glastonbury                |
| City        | Edmonton                   |
| County      | ALBERTA                    |
| Province    | AB                         |
| Postal Code | T5T 6W6                    |

### Amenities

|           |                           |
|-----------|---------------------------|
| Amenities | Deck, Gazebo, See Remarks |
| Parking   | Double Garage Attached    |

### Interior

|                   |   |
|-------------------|---|
| Interior Features | ensuite bathroom  |
| Appliances        | Dishwasher-Built-In, Dryer, Garage Control, Garage Opener, Refrigerator, Stove-Electric, Washer |
| Heating           | Forced Air-1, Natural Gas   |
| Fireplace         | Yes   |
| Fireplaces        | Corner  |
| Stories           | 3   |
| Has Basement      | Yes   |
| Basement          | Full, Finished  |

### Exterior

|                   |  |
|-------------------|--|
| Exterior          | Wood, Stone, Vinyl   |
| Exterior Features | Cul-De-Sac, Fenced, Landscaped, Playground Nearby, Schools, Shopping Nearby, See Remarks |

|              |                    |
|--------------|--------------------|
| Roof         | Asphalt Shingles   |
| Construction | Wood, Stone, Vinyl |
| Foundation   | Concrete Perimeter |

**Additional Information**

|                |                     |
|----------------|---------------------|
| Date Listed    | February 28th, 2025 |
| Days on Market | 52                  |
| Zoning         | Zone 58             |

DATA IS DEEMED RELIABLE BUT IS NOT GUARANTEED ACCURATE BY THE REALTORS® ASSOCIATION OF EDMONTON. COPYRIGHT 2025 BY THE REALTORS® ASSOCIATION OF EDMONTON. ALL RIGHTS RESERVED.Trademarks are owned or controlled by the Canadian Real Estate Association (CREA) and identify real estate professionals who are members of CREA (REALTOR®, REALTORS®) and/or the quality of services they provide (MLS®, Multiple Listing Service®)

Listing information last updated on April 21st, 2025 at 7:47am MDT