

Courtesy Of Brian C Cyr and Erin L Willman Of RE/MAX Elite

\$759,900 - 80 Normandeau Crescent, St. Albert

MLS® #E4424047

\$759,900

5 Bedroom, 3.50 Bathroom, 2,618 sqft
Single Family on 0.00 Acres

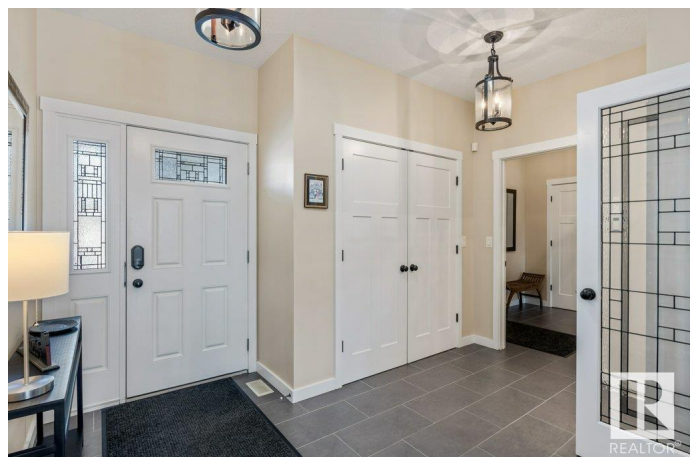
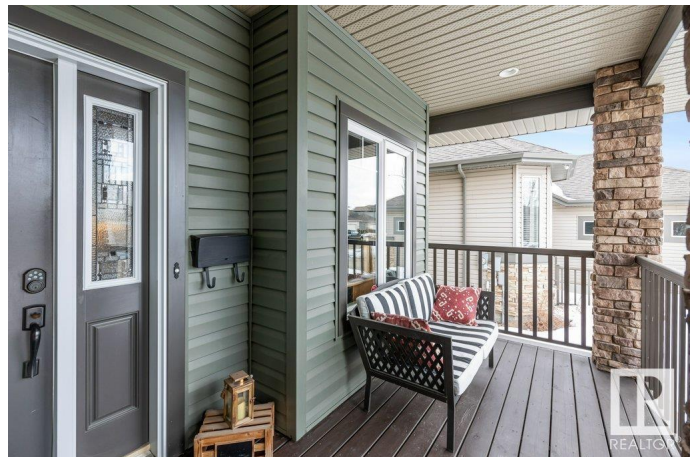
North Ridge, St. Albert, AB

Pride of ownership, outstanding layout & impeccable condition all shine through in this custom built 2617 sq ft, PLUS fully developed basement, 5 bedroom 2 storey home. Situated on a gorgeous crescent steps from walking trails, stellar curb appeal welcomes you as you step inside to a large foyer & main floor den adjacent to the open family room with cozy gas fireplace blanketed in rich wide plank engineered hardwood. Enjoy clear views to the gourmet kitchen featuring stainless appliances & large island with granite counters. The large walkthrough pantry leads to a spacious mudroom & 2pce bath next to the heated garage access. Upstairs features a large bonus room, 3 spacious bedrooms including a 5pce master suite with heated tile flooring, large walkthrough closet with direct access to the laundry room. The fully developed lower level offers a large rec area, 2 bedrooms & full bath. Top it off with AC, South facing backyard with a large covered deck and patio area with it truly is a 10+ family home!

Built in 2009

Essential Information

MLS® #	E4424047
Price	\$759,900
Bedrooms	5



Bathrooms	3.50
Full Baths	3
Half Baths	1
Square Footage	2,618
Acres	0.00
Year Built	2009
Type	Single Family
Sub-Type	Detached Single Family
Style	2 Storey
Status	Active

Community Information

Address	80 Normandeau Crescent
Area	St. Albert
Subdivision	North Ridge
City	St. Albert
County	ALBERTA
Province	AB
Postal Code	T8N 3C7

Amenities

Amenities	Air Conditioner, Deck, See Remarks
Parking	Double Garage Attached, Heated

Interior

Interior Features	ensuite bathroom
Appliances	Air Conditioning-Central, Dishwasher-Built-In, Dryer, Garage Control, Garage Opener, Hood Fan, Oven-Microwave, Refrigerator, Storage Shed, Stove-Gas, Vacuum Systems, Washer, Window Coverings, Wine/Beverage Cooler, Garage Heater
Heating	Forced Air-1, Natural Gas
Fireplace	Yes
Fireplaces	Mantel, Stone Facing
Stories	3
Has Basement	Yes
Basement	Full, Finished

Exterior

Exterior	Wood, Stone, Vinyl
----------	--------------------

Exterior Features	Fenced, Flat Site, Fruit Trees/Shrubs, Landscaped
Roof	Asphalt Shingles
Construction	Wood, Stone, Vinyl
Foundation	Concrete Perimeter

Additional Information

Date Listed	March 5th, 2025
Days on Market	9
Zoning	Zone 24

DATA IS DEEMED RELIABLE BUT IS NOT GUARANTEED ACCURATE BY THE REALTORS® ASSOCIATION OF EDMONTON. COPYRIGHT 2025 BY THE REALTORS® ASSOCIATION OF EDMONTON. ALL RIGHTS RESERVED. Trademarks are owned or controlled by the Canadian Real Estate Association (CREA) and identify real estate professionals who are members of CREA (REALTOR®, REALTORS®) and/or the quality of services they provide (MLS®, Multiple Listing Service®)

Listing information last updated on March 14th, 2025 at 10:47am MDT